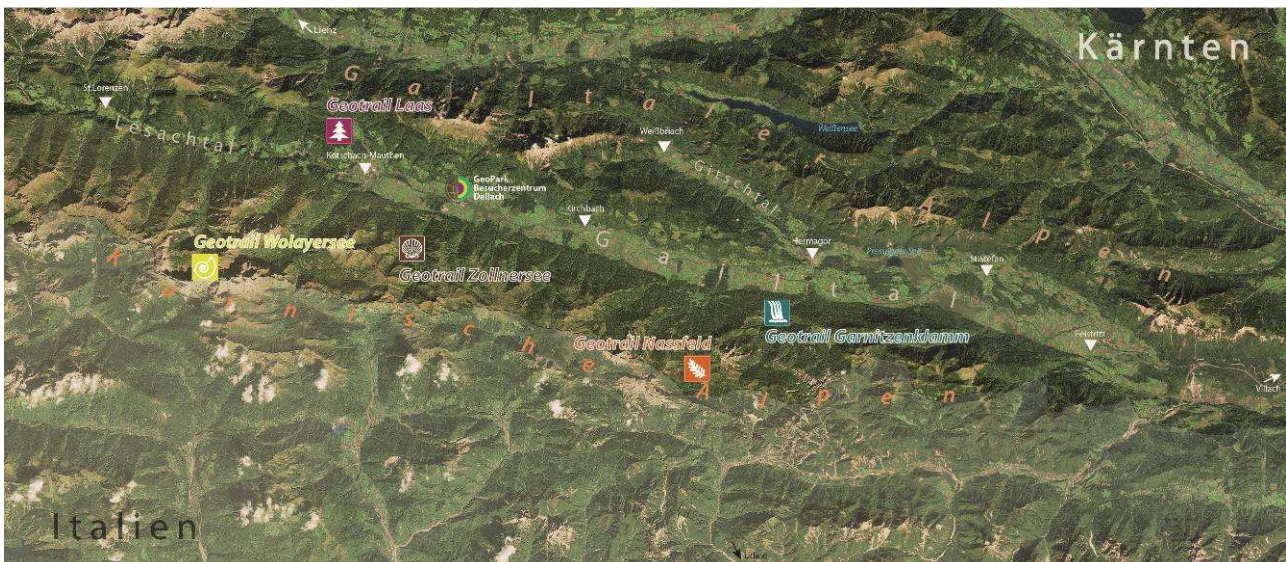
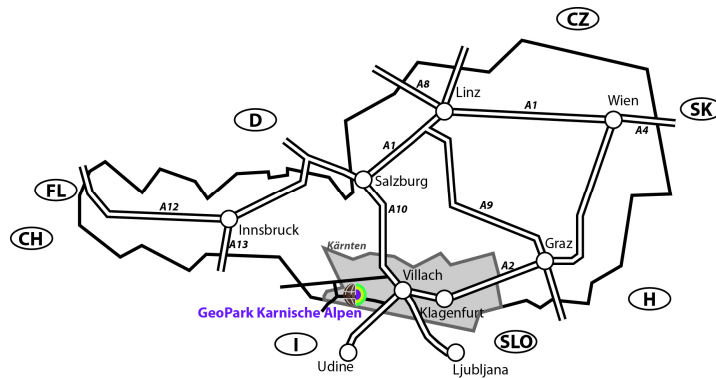


Press release: Short information about the GeoPark Carnic Alps

The approx. 830 km² big Geopark Carnic Alps in southern Austria extends from the community of Feistritz/Gail in the east to the community of Maria Lggau in the west and from the state border in the south to Lake Weißensee in the north. It comprises the whole District of Hermagor and includes the Carnic Alps, the Gailtal Alps, the southern Lienz Dolomites and the Gail Valley.



The GeoPark Carnic Alps with Geotrails

All communities of the district and the community of Feistritz/Gail outside the district support this regional project with the Visitor Center of Dellach/Gail. The Geopark has started in autumn 2010 its application to become a member of the European and global Geopark Network supported by UNESCO. This application was finally approved on March 8, 2012.

At present in Europe 52 Geoparks from 18 countries are officially designated Geoparks. As of Oct. 2012, 90 Geoparks in 27 Member States are currently members of the Global Geoparks Network assisted by UNESCO.



The GeoPark Carnic Alps and its Geotopes