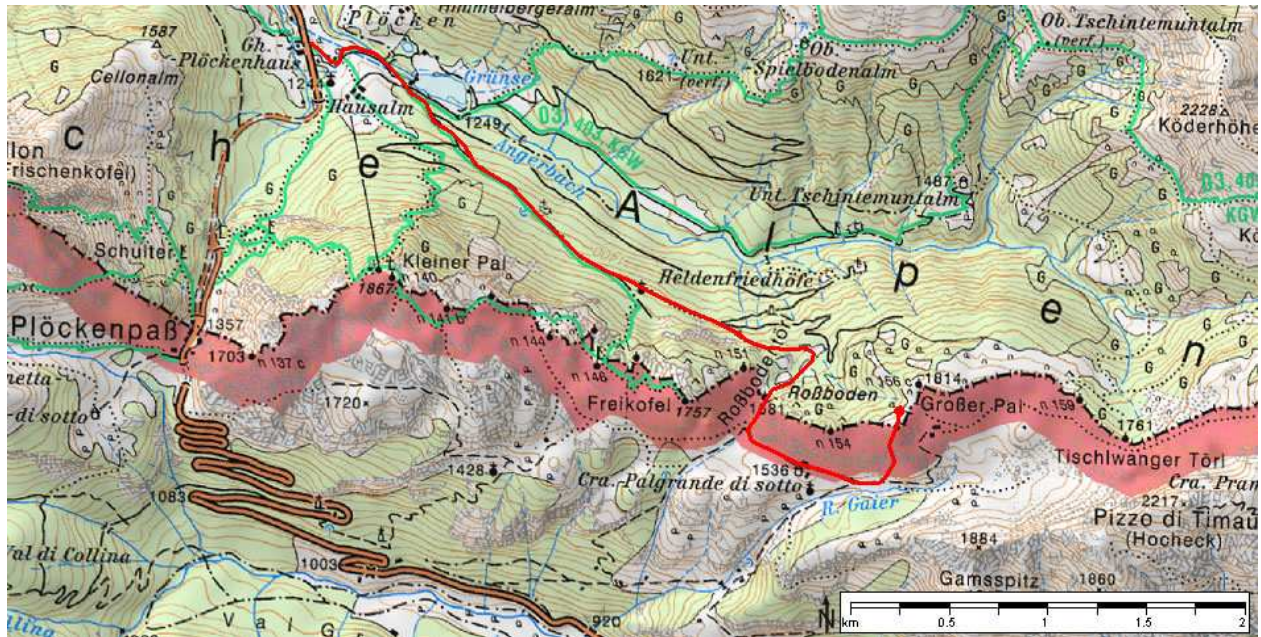


Geotope 45: Großer Pal – Home of the Ur-Calamary



Red marking: Hiking route according to advance description; green tracks: hiking trails; ©BEV: Federal Office for Calibration and Measurement, 2005.

Access:

Marked trail from Plöckenhaus along the Angerbach Creek, crossing the state border near “Roßboden” to “Cra. Palgrande di sotto” and further on to the southern foresummit (1760 m) of the main peak of Pal Grande (1814 m). Along the crest many fortifications and trenches from World War I are occurring.

Description of the Geotope



View from Kleiner Pal to Großer Pal, Pizzo di Timau at the back

The southern foresummit of Großer Pal (Pal Grande) has an altitude of 1760 m. The whole area in the surrounding of the border rock n-155 has been described in great detail during the last years and several short sections were measured and macro- and microfossils were collected and processed. In the meantime, in particular, the distribution of conodonts, trilobites and ammonoids has been well documented. They occur in well-bedded greyish and fine-grained limestones of Upper Devonian age (370 to 390 m.y. BP), which display a net-like structure on the surface caused by clay interpartings. Though very abundant, the fauna is rather small when compared with coeval faunas from other regions. This dwarfism may suggest a deep-water environment.



Limestone slab with a goniatic, forerunner of Mesozoic ammonites.